



Auhagen

DIVERSITY, QUALITY, DETAILED LIFE.

NEW ITEMS 2023

KITS AND ACCESSORIES FOR MODEL RAILWAYS H0 · TT · N

*Tradition
seit
1885*

WWW.AUHAGEN.DE

11 470



Not included in the kit: No. 11 403 Two-road engine shed

11 470



11 470



11 470 H0 Wolkenstein small coaling station

With its tipper wagons and conveyor belt, the archaic process for coaling narrow-gauge locomotives at the starting point of the Pressnitz Valley Railway must have been photographed thousands of times before the line's closure in 1986. The original scene is faithfully recreated with two tipper wagons, straight and curved track (640 mm total length), a conveyor belt, accommodation truck with realistic tyres and printing, as well as the coal bunker and requisite equipment. Also suitable for smaller standard-gauge steam locomotives.

Construction trailer 58 x 22 x 35 mm

Coal store 61 x 32 x 15 mm

Conveyor belt 75 x 15 x 35 mm

Tilter overall length 19 mm

Available from 07/2023

11 470



11 470



41 677 H0
Multicar M22 with trailer

Kit. A towed trailer is ideal for the safe transport of long goods – in this case the prestressed concrete poles included with the kit. The load rests both on the fifth wheel of the well-known Multicar M22 and between the rungs of the trailer attached by an adjustable drawbar.

Available from 03/2023

96 x 15 x 22 mm

41 677



Einmal
AUFLAGE

41 677



Einmal
AUFLAGE

41 677



Einmal
AUFLAGE

41 677



Einmal
AUFLAGE

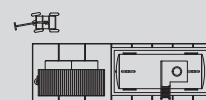
11 469



11 469



11 469 H0
Switcher
locomotive
fuelling station

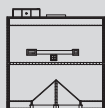


From the 1930s onwards, the use of small diesel locomotives – “Switcher” – for shunting duties at stations and in industrial plants required appropriate handling equipment. This realistic model of a fuelling station, modernised in the 1960s with a fuel tank, sheltered column pump, oil trolley and lubricant store, is the perfect partner for small locomotives (No. 11 429).

Available from 07/2023

90 x 30 x 37 mm

11 471 H0 Schmidt Street 39



The most representative building yet in our popular townhouse series takes the series further with innovations and new extra features.

The Hotel Schwan model stands out not only for its finely detailed roof, imposing bay frontage and the fittings of its ground-floor bar and lobby; it can also be complemented with a motor (No. 58 200) to drive its revolving door and LED lighting for a functioning illuminated "Hotel Schwan" sign (No. 58 101). One or both pieces of optional equipment should be installed when assembling the precisely fitting building.

Available from 09/2023

123 x 126 x 210 mm

11 471



11 471



11 471



WITH MOVABLE
REVOLVING DOOR!
We recommend from
our range No 58 200
Motor.

11 471



Hand pattern model

58 101 H0 LED-illuminated sign „Hotel Schwan“

Kit. Experience in soldering and handling of electronic components necessary. Functional illuminated signs that can be installed in our buildings 11 471 and 11 472 (with more on the way). With a little improvisational skill, they can also be installed in other building models. Power supply via USB.

Available from 09/2023

58 101



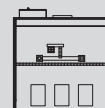
Hand pattern model

11 472



Hand pattern model

11 472 H0
Schmidt
Street 41



As well as its clearly structured new façade, back-yard design with lift shaft and its shop fittings, the new travel agency also has an upgrade option: in this case, an LED-illuminated "Reisebüro" sign (No. 58 102) which should likewise be installed while assembling the kit. Of course, each building can also be fitted with the sign of the other.

Available from 09/2023

100 x 105 x 215 mm

11 472



11 472



11 472



58 102



Hand pattern model

58 102 H0
LED-illuminated sign
„Reisebüro“

Kit. Experience in soldering and handling of electronic components necessary. Functional illuminated signs that can be installed in our buildings 11 471 and 11 472 (with more on the way). With a little improvisational skill, they can also be installed in other building models. Power supply via USB.

Available from 09/2023

11 473

Hand pattern model



11 473 H0 Traffic tower with accessories

Rapidly increasing car ownership in the 1960s created a need for safe traffic monitoring and control at critical traffic intersections in cities.

Towers of this type were used to observe and direct traffic. When necessary, it was possible to manually control the traffic-light systems for trams, trolleybuses and cars from the tower on which our model is based. If the technology failed, a member of the traffic police could direct the traffic conventionally from a pedestal in the middle of the crossing. Both scenarios can be recreated using the appropriate unpainted figures included. Authentic historical model

Available from 09/2023

11 473

Hand pattern model



11 473

Hand pattern model



11 473



Hand pattern model

52 246

52 446



Hand pattern model



SCAN MICH

See the model
construction tip at
www.auhagen.de:

Installation of LED lighting in street lamps

H0/TT Asphalt

Accessory sheet „Asphalt“ with imprinted, repaired damaged areas. Made of strong polystyrene, finely detailed, dozen of uses.

52 246

2 pieces

52 446

12 pieces

Available from 03/2023

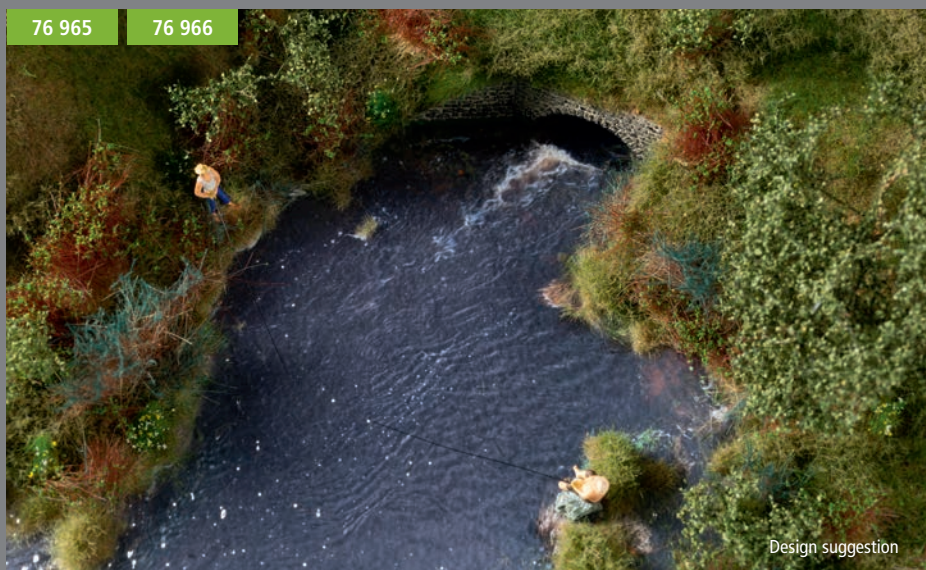
Each 100 x 200 mm





76 965

76 966



Design suggestion

76 965 H0/TT/N River course with water surface

Use this print on high-quality paper and the transparent, structured corrugated film included to easily create an individual river course with riverbank greenery for your model-railway system or diorama. Can be used for all nominal sizes.

3 parts each 70 x 50 cm
Total length 200 cm

Available from 03/2023

76 965



Teil / Part 1

Teil / Part 2

Teil / Part 3

76 965

76 966



Design suggestion

76 966 H0/TT/N Pond

Use this print on high-quality paper and the transparent, structured corrugated film included to easily create an individual river course with riverbank greenery for your model-railway system or diorama. Can be used for all nominal sizes.

2 parts each 21 x 29,7 cm
Total length 42 cm

Available from 03/2023

Professional tip:

The „Old oilseed mill“ Art. 13 353, fits perfectly to the river course with water surface - or to the the pond.

76 966



Teil / Part 1

Teil / Part 2



Design suggestion

13 351



Hand pattern model

13 351 TT Gas station

The small, rural filling station for bottled gas covers the propane gas requirements of private consumers in its catchment area for cooking, heating and hot water, and supplies small and medium-sized businesses.

The model, consisting of a main and ancillary building and gas tank, is complemented by the gas bottles of various sizes, transport crates and extensive decoration included.

Available from 07/2023

43 679 TT Multicar M25 flatbed with gas bottles

Kit. Built in Waltershausen from 1978, the Multicar M25 was delivered ex works with a variety of superstructure options. Here, the most classic option – the flatbed truck – is carrying gas bottles (included) to customers in detailed printed VEB MINOL livery and on authentic tyres. The perfect companion for the gas station (No. 13 351)

Available from 07/2023

32 x 17 x 18 mm

13 351



13 351



43 679



Hand pattern model

Einmal
AUFLAGE

43 679

Einmal
AUFLAGE

43 679

Einmal
AUFLAGE

13 352



Hand pattern model

13 352

Hand pattern model



13 352

Hand pattern model



13 352 TT Traffic tower with accessories

Rapidly increasing car ownership in the 1960s created a need for safe traffic monitoring and control at critical traffic intersections in cities.

Towers of this type were used to observe and direct traffic. When necessary, it was possible to manually control the traffic-light systems for trams, trolleybuses and cars from the tower on which our model is based. If the technology failed, a member of the traffic police could direct the traffic conventionally from a pedestal in the middle of the crossing. Both scenarios can be recreated using the appropriate unpainted figures included. Authentic historical model

Available from 09/2023

13 352

Hand pattern model



13 352

Hand pattern model



43 680 TT Loader T172

Kit. From 1961 on, VEB Weimar-Werk's T172 loader – successor and further development of the T170 – was prized as an indispensable aid in the construction and agricultural sectors. With the usual fine detailing and mobility, this will soon prove to also be the case in TT scale. Meticulous printing and true-to-life tyres lend the sought-after model a particular authenticity. Highly detailed model

Available from 09/2023

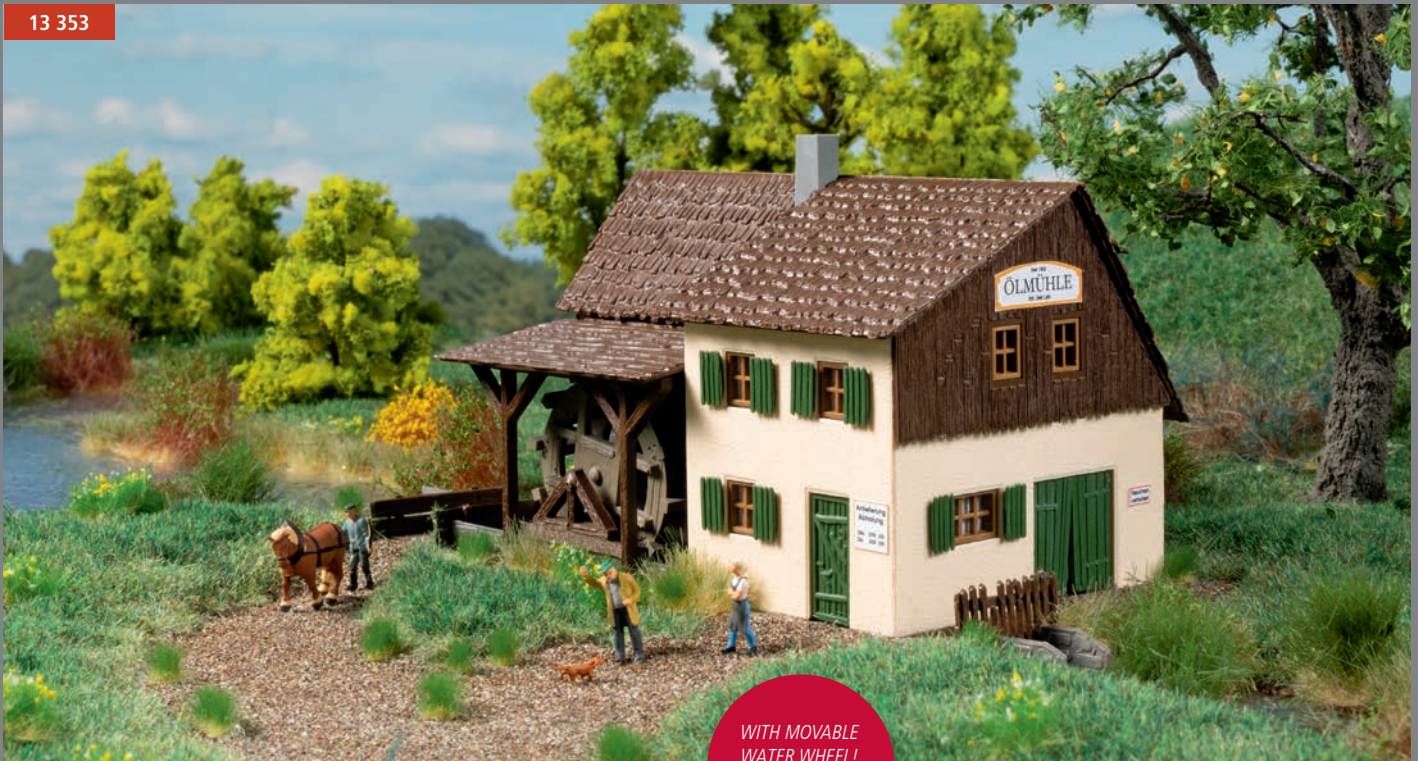
43 680



Einmal
AUFLAGE

Abbildung Handmuster

13 353



13 353



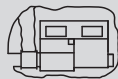
13 353



58 200



13 353 TT Old oilseed mill



Our well-known model of the architecturally historical wood-shingled oil mill has been redesigned for the installation of a motor (No. 58 200). Installing this optional extra while assembling the mill makes it child's play to fit an electrically driven waterwheel.

Motor not included – can be combined with No. 58 200.

Available from 03/2023

168 x 110 x 100 mm

13 353



13 353



58 200 H0/TT/N Motor

Plug-and-play electric gear motor. Power supply via USB. Ideal for installation during the assembly of Auhagen models 11 471 and 13 353 (with more on the way). Can also be used for your own individual projects. Please make sure to note the product description included.

40 mm (+11 mm shaft, diam. 3 mm with flattened surface) × 32 mm × 23 mm
21 rpm
5V = USB

Available from 03/2023

14 489



14 489 N
Electricity substation



This building, in the clinker-brick construction style typical of the landscape, was built to supply energy. The original used an internally fitted transformer to step down the 10 kV of the medium-voltage network to 230 / 400 V for the local network. The easily assembled modular kit includes 9 medium-voltage transmission towers. Authentic historical model

Available from 07/2023

17 x 19 x 51 mm

14 489



14 489



44 658



Einmal
AUFLAGE

44 658 N
Multicar M22 flatbed with
long-goods trailer

Kit. Here, the finely detailed and printed Multicar M22 pick-up model in a new colourway is hauling an intricate long-goods trailer. Its load, which is included, consists of pre-stressed concrete poles for street lighting, making the truck-and-trailer combination a good partner for the electricity substation (No. 14 489).

Available from 07/2023

66 x 8 x 12 mm

44 658



Einmal
AUFLAGE

44 658



Einmal
AUFLAGE

44 658



Einmal
AUFLAGE



*Tradition
seit
1885*

WWW.AUHAGEN.DE

YOUR MODEL RAILWAY DEALER

Our catalog No. 17 was published in February 2022 and with the addition of the 2023 new items brochure, the catalog is complete and valid. You can obtain a copy from your dealer or direct from us for 4,00 EUR plus postage.

Auhagen GmbH

OT Hüttengrund 25
09496 Marienberg/Erzgeb.
Tel.: + 49 (0) 37 35 . 66 84 66
E-Mail: info@auhagen.de
www.auhagen.de

